

Available in configuration with three or four mounting assemblies.



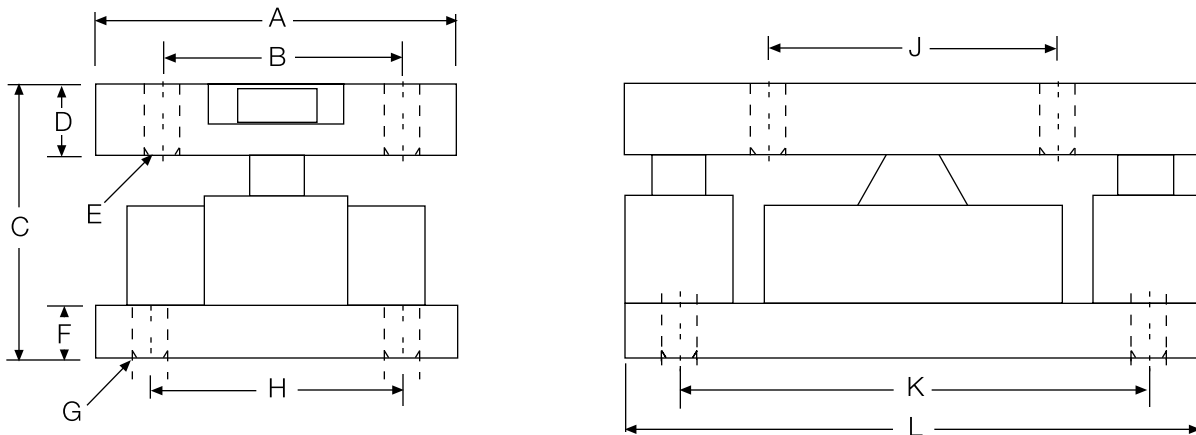
STANDARD FEATURES

- Capacities: 2500-50,000lb (1134-22,680kg)
- Low-profile design
- High 4 mV/V output (2mV/V, 2500lb)
- Self-centering in all directions—able to withstand excessive side loads
- Self-checking assembly

Complete Kit Includes:

- 1 JB4SS NEMA 4X stainless steel signal-trim junction box
- 3 or 4 RL2200 stainless steel mounting assemblies
- 3 or 4 RL2200 SS stainless steel, hermetically-sealed compression disk load cells
- 25ft of our Hostile Environment EL147HE SURVIVOR® load cell cable

SPECIFICATIONS



DIMENSIONS

RATED CAPACITY	A	B	C	D	E	F	G	H	J	K	L
lb/inches											
2500-10,000	5.00	3.50	4.00	1.00	.52	1.00	.52	3.50	4.00	6.50	8.00
25,000-50,000	6.00	4.50	5.00	1.25	.78	1.00	.78	4.50	5.00	7.75	10.00
kg/mm											
1134-4536	127.0	88.9	101.6	25.4	13.2	19.0	13.2	88.9	101.6	165.1	203.2
11,340-22,679.6	152.4	114.3	127.0	31.7	19.8	25.4	19.8	114.3	127.0	196.8	254.0

LOAD RATING**PART #****Single Module (includes load cell)**

2500lb (1134 kg)	76657
5000lb (2268 kg)	45845
10,000lb (4536 kg)	45844
25,000lb (11,340 kg)	45843
50,000lb (22,680 kg)	45842

3-Module Kit

2500lb (1134 kg)	76899
5000lb (2268 kg)	46478
10,000lb (4536 kg)	46479
25,000lb (11,340 kg)	46480
50,000lb (22,680 kg)	46481

4-Module Kit

2500lb (1134 kg)	76900
5000lb (2268 kg)	46482
10,000lb (4536 kg)	46483
25,000lb (11,340 kg)	46484
50,000lb (22,680 kg)	46485

C&M Scale
7241 W. Roosevelt Rd
Forest Park IL 60130
Sales, Service & Rentals

Toll Free: (800) 243-3721
Phone: (708) 771-0100
Fax: (708) 771-0196
www.cmscale.com