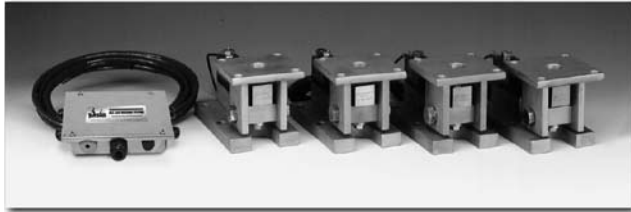


# RL1900 Series



Available in configuration with three or four mounting assemblies.

## LOAD CELL CERTIFICATIONS



## STANDARD FEATURES

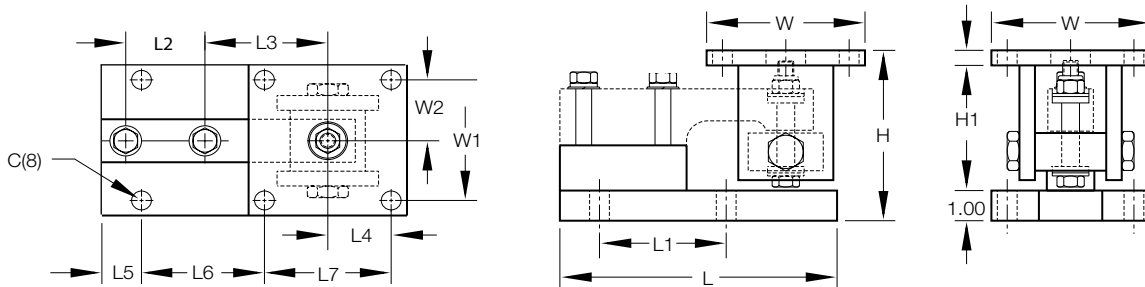
- NTEP Certified load cells, 1:5000d, Class III Single Cell
- Capacities (per module): 1000-10,000lb (453.6-4535.9kg)
- 304 stainless steel construction
- Center-pivoted, tension loading design
- Welded-seal stainless steel load cells
- Self-checking, multi-directional movement
- Easy load cell replacement
- Load is suspended on high-strength bolt instead of wire rope
- Design incorporates spherical washers

### Complete Kit Includes:

- 1 JB4SS NEMA 4X stainless steel signal-trim junction box
- 3 or 4 RL1900 mild or stainless steel compression mounts
- 3 or 4 RLSSB welded seal stainless steel single-ended beam load cells
- 25ft of Hostile Environment EL147HE SURVIVOR® load cell cable

## SPECIFICATIONS

DIMENSIONS															
RATED CAPACITY	C	MIN/MAX	H	H1	L	L1	L2	L3	L4	L5	L6	L7	W	W1	W2
<b>lb/inches</b>															
1000-5000	.62	5.38/5.62	.50	8.75	4.00	2.50	3.88	2.00	1.12	4.00	4.00	5.00	4.00	4.00	2.00
10,000	.81	6.88/7.50	1.00	9.75	5.00	2.63	4.88	2.25	1.00	5.00	4.50	6.00	4.50	2.25	
<b>kg/mm</b>															
453.6-2268.0	15.8	136.7/142.9	12.7	222.3	101.6	63.5	98.6	50.8	28.4	101.6	101.6	127.0	101.6	50.8	
4535.9	20.6	174.8/190.5	25.4	247.7	127.0	66.8	124.0	57.2	25.4	127.0	114.3	152.4	114.3	57.2	



**LOAD RATING (LOAD CELL CAPACITY)**

**PART #**

**Single Module (Does NOT Include Load Cell)**

1000-5000 lb (453.6-2268.0 kg).....	17841.....
10,000 lb (4535.9 kg) .....	17843.....

**3-Module Kit**

1000 lb (453.6 kg) .....	18109.....
2000 lb (907.2 kg) .....	18110.....
5000 lb (2268.0 kg) .....	18111.....
10,000 lb (4535.9 kg) .....	18112.....

**4-Module Kit**

1000 lb (453.6 kg) .....	18113.....
2000 lb (907.2 kg) .....	18114.....
5000 lb (2268.0 kg) .....	18115.....
10,000 lb (4535.9 kg) .....	18116.....

**C&M Scale**  
7241 W. Roosevelt Rd  
Forest Park IL 60130  
**Sales, Service & Rentals**

**Toll Free: (800) 243-3721**  
**Phone: (708) 771-0100**  
**Fax: (708) 771-0196**  
**www.cmscale.com**