



Available in configuration with three or four mounting assemblies.

LOAD CELL CERTIFICATIONS



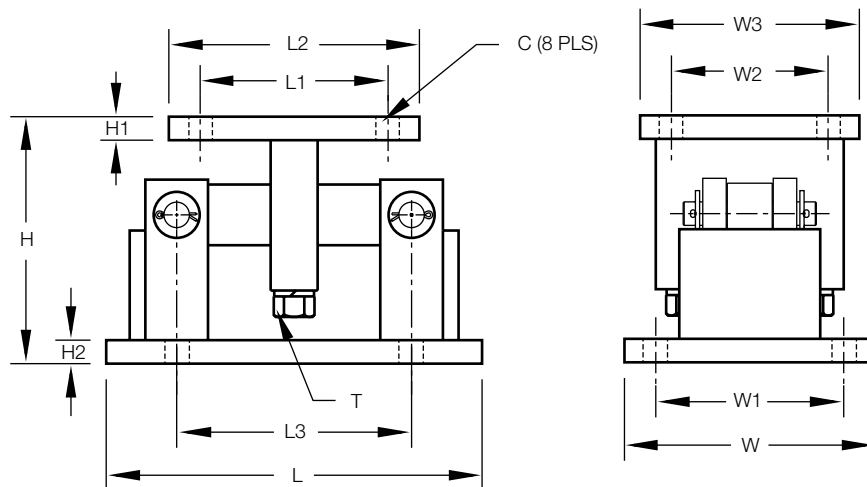
STANDARD FEATURES

- Capacities (per module): 1000-75,000lb (453.6-34,019.5kg)
- Painted, mild steel construction
- Self-checking easy-to-use design allows module to be bolted directly to tank leg without requiring additional mounting plates or load buttons
- Environmentally protected load cells
- Double-ended shear beam design, center loaded

Complete Kit Includes:

- 1 JB4SS NEMA 4X stainless steel signal-trim junction box
- 3 or 4 RL1600 painted mild steel compression mounts
- 3 or 4 RL75016 double-ended shear beam load cells
- 25ft of our Hostile Environment EL147HE SURVIVOR® load cell cable

SPECIFICATIONS



DIMENSIONS

RATED CAPACITY lb/inches

	C	H	H1	H2	L	L1	L2	L3	T	W	W1	W2	W3
1000-5000	.56	5.00	.50	.50	9.25	2.75	4.00	6.25	1/2-13 UNC	5.00	3.75	2.75	4.00
10,000-25,000	.78	7.87	.75	.75	12.00	6.00	8.00	7.50	3/4-10 UNC	8.00	6.00	6.00	8.00
50,000-75,000	.78	9.31	1.00	1.00	16.25	6.50	9.00	11.50	1 1/4-7 UNC	12.00	9.50	6.50	9.00

kg/mm

453.6-2268.0	14.2	127.0	12.7	12.7	235.0	69.9	101.6	158.8	1/2-13 UNC	127.0	95.3	69.9	101.6
4535.9-11,339.8	19.8	199.9	19.1	19.1	304.8	152.4	203.2	190.5	3/4-10 UNC	203.2	152.4	152.4	203.2
22,679.7-34,019.5	19.8	236.5	25.4	25.4	412.8	165.1	228.6	292.1	1 1/4-7 UNC	304.8	241.3	165.1	228.6

**LOAD RATING
(PER MODULE)**

PART #

Single Module (DOES NOT Include Load Cell)

1000-5000lb (453.6-2268.0kg).....	17812.....
10,000-25,000lb (4535.9-11,339.8kg).....	17814.....
50,000lb (22,679.6kg).....	17816.....
75,000lb (34,019.5kg).....	25346.....

3-Module Kit

1000lb (453.6kg).....	18117.....
1500lb (680.4kg).....	18118.....
2000lb (907.2kg).....	18119.....
2500lb (1134.0kg).....	18120.....
3000lb (1360.8kg).....	18121.....
5000lb (2268.0kg).....	18122.....
10,000lb (4535.9kg).....	18123.....
15,000lb (6803.9kg).....	18124.....
20,000lb (9071.9kg).....	18125.....
25,000lb (11,339.8kg).....	18126.....
50,000lb (22,679.6kg).....	18127.....
75,000lb (34,019.5kg).....	25348.....

4-Module Kit

1000lb (453.6kg).....	18129.....
1500lb (680.4kg).....	18130.....
2000lb (907.2kg).....	18131.....
2500lb (1134.0kg).....	18132.....
3000lb (1360.8kg).....	18133.....
5000lb (2268.0kg).....	18134.....
10,000lb (4535.9kg).....	18135.....
15,000lb (6803.9kg).....	18136.....
20,000lb (9071.9kg).....	18137.....
25,000lb (11,339.8kg).....	18138.....
50,000lb (22,679.6kg).....	18139.....
75,000lb (34,019.5kg).....	25349.....
Equalizer pad, 1000lb – 5000lb.....	67152.....
Equalizer pad, 10,000lb – 25,000lb.....	67153.....

Dummy Load Cells (Mild steel)

1000lb – 5000lb (453.6kg – 2268.0kg).....	18236.....
10,000lb – 25,000lb (4535.9kg – 11,339.8kg).....	18237.....
50,000lb – 75,000lb (22,679.6kg – 34,019.5kg).....	18238.....

C&M Scale
7241 W. Roosevelt Rd
Forest Park IL 60130
Sales, Service & Rentals

Toll Free: (800) 243-3721
Phone: (708) 771-0100
Fax: (708) 771-0196
www.cmscale.com