

SURVIVOR® 2100HE

Weigh Modules



LOAD CELL CERTIFICATIONS



STANDARD FEATURES

- All stainless steel construction
- Welded seal, stainless steel load cells, IP67, guaranteed waterproof
- NTEP Certified load cells, 5000d, Class III/10,000d, Class III Multiple Cell
- Bolt-in-place design; module bolts directly to tank leg without requiring additional load buttons or mounting plates
- Self-checking design with lift-off/tip-over protection
- 2-year limited warranty

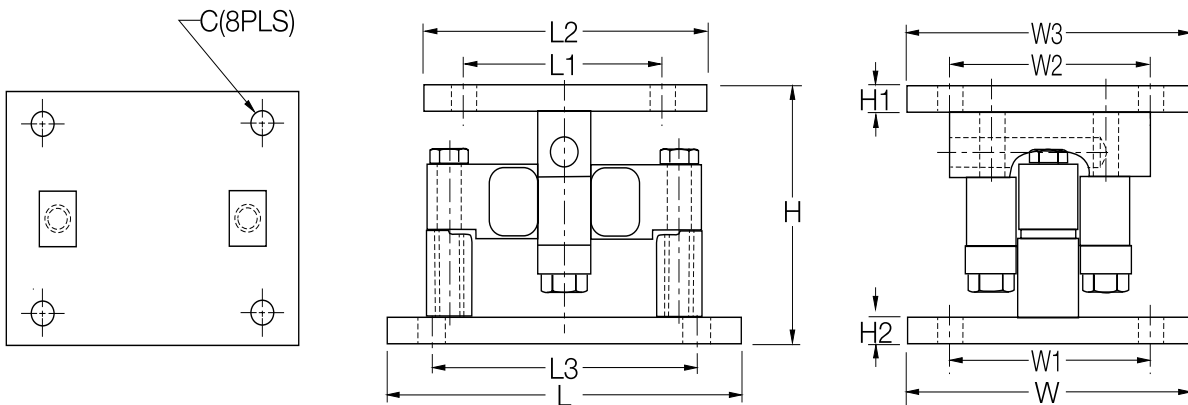
Complete Kit Includes:

- 1 JB4SS NEMA 4X stainless steel signal-trim junction box
- 3 or 4 2100HE stainless steel compression mounts
- 3 or 4 RL75060S stainless steel, welded seal single-ended beam load cells
- 25 ft of Hostile Environment EL147HE SURVIVOR® load cell cable

SPECIFICATIONS

DIMENSIONS

RATED CAPACITY lb/inches	C	H	H1	H2	L	L1	L2	L3	W	W1	W2	W3
20,000-25,000	.78	6.85	.75	.75	10.00	6.00	8.00	7.50	8.00	6.00	6.00	8.00
35,000-100,000	1.13	9.42	1.00	1.00	14.00	6.50	9.00	11.50	10.00	7.50	6.50	9.00
RATED CAPACITY kg/mm	C	H	H1	H2	L	L1	L2	L3	W	W1	W2	W3
9071.9-11,339.8	19.8	174.0	19.1	19.1	254.0	152.4	203.2	190.5	203.2	152.4	152.4	203.2
15,875.7-45,359.2	28.7	239.3	25.4	25.4	355.6	165.1	228.6	292.1	254.0	190.5	165.1	228.6



**LOAD RATING
(PER MODULE)**

PART #

Single Module (Includes Load Cell)

20,000 lb (9071.8 kg)	32951
25,000 lb (11,339.8 kg)	65541
35,000 lb (15,875.7 kg)	32952
50,000 lb (22,679.6 kg)	32953
60,000 lb (27,215.5 kg)	32954
75,000 lb (34,019.4 kg)	32955
100,000 lb (45,359.2 kg)	32956

3-Module Kit

20,000 lb (9071.8 kg)	32970
25,000 lb (11,339.8 kg)	65984
35,000 lb (15,875.7 kg)	32969
50,000 lb (22,679.6 kg)	32968
60,000 lb (27,215.5 kg)	32967
75,000 lb (34,019.4 kg)	32966
100,000 lb (45,359.2 kg)	32965

4-Module Kit

20,000 lb (9071.8 kg)	32964
25,000 lb (11,339.8 kg)	65983
35,000 lb (15,875.7 kg)	32963
50,000 lb (22,679.6 kg)	32962
60,000 lb (27,215.5 kg)	32961
75,000 lb (34,019.4 kg)	32960
100,000 lb (45,359.2 kg)	32959