

## Ishida Astra

## Price Computing Scale with Printer



### STANDARD FEATURES

- Programmable function keys
- Store up to 2,000 PLUs
- Print speed of 3.15 in (80mm) per second
- Convenient side-loading label feature
- RS-232 communications (for AstraLink)
- Proportional tare
- 44 keys store up to 88 presets

### APPROVALS



### SPECIFICATIONS

#### CAPACITY/GRADUATIONS:

30lb x 0.01lb (15kg x 0.005kg)

#### DISPLAY:

Tare: 4-digits  
Weight: 6-digits  
Unit/Price: 5-digits  
Total Price: 6-digits

#### ACCURACY:

1/3000

#### LABEL WIDTH:

1.5in - 2.52in (38mm - 64mm)

#### LABEL LENGTH:

1.18in - 3.35in (30mm - 85mm)

#### LABEL BACKING PAPER WIDTH:

Up to 2.64in (up to 67mm)

#### PRINTING SPEED:

3.15in per second (80mm per second)

#### LABEL ROLL DIMENSIONS:

Inside diameter: 1.57in (40mm)  
Outside diameter: 3.94in (100mm)

#### COMMUNICATIONS:

RS-232 (for AstraLink PLU editor)  
Scale data copy function  
Windows® 95, 98 NT, and XP

#### KEYBOARD:

64 keys (88 presets using Mode key)

#### MEMORY CAPACITY:

256K, 2000 PLUs (30 characters per PLU)

#### APPROVALS:

NTEP Certified CC# 00-107  
UL listed

#### WARRANTY:

One-year limited warranty

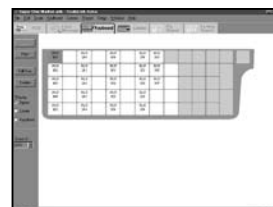
#### Astralink PLU editing software available



PLU Search Screen



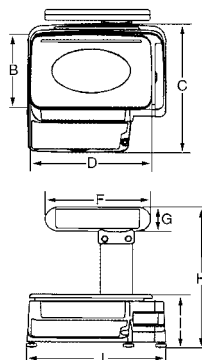
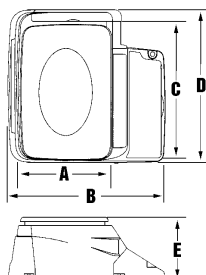
PLU Entry Screen



Program Astra Preset Keys



Preview PLU List Report Before Printing



DIMENSIONS WITHOUT POLE DISPLAY			
<b>A</b>	9.2in (234mm)	<b>D</b>	15.7in (400mm)
<b>B</b>	16.3in (414mm)	<b>E</b>	6.5in (165mm)
<b>C</b>	14.1in (358mm)		

DIMENSIONS WITH POLE DISPLAY			
<b>B</b>	9.2in (234mm)	<b>G</b>	3.1in (80mm)
<b>C</b>	16.3in (415mm)	<b>H</b>	18.3in (465mm)
<b>D</b>	14.0in (356mm)	<b>I</b>	6.9in (176mm)
<b>F</b>	12.2in (310mm)	<b>J</b>	15.7in (400mm)

Windows is a registered trademark of Microsoft corporation

© 2009 Rice Lake Weighing Systems 02/09

Prices and specifications subject to change without notice. Visit [ricelake.com](http://ricelake.com) for current prices.

**RICE LAKE**  
WEIGHING SYSTEMS  
Commitment Beyond Measurement®

