

Why the



is the programmable solution you've been looking for.



INTRODUCTION GUIDE

What does the introduction of the 920i mean to you?

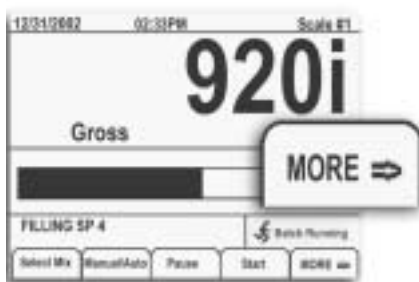
Imagine an indicator/controller that can do everything. One instrument for any application. It's reality, and it's the 920i. Desktop, wall mount, panel mount, and universal models are available to satisfy the entire marketplace. From batching to data acquisition, truck scales to multi-scale applications, the 920i can do it all.

The 920i will not only allow you to offer more solutions and open up greater sales opportunities, it will also dramatically reduce configuration and programming time. Configuration can be done on-site through the front panel or with the fastest and easiest configuration tool on the market: iRev™. Taking Revolution's™ capability of configuration on a PC even further, iRev has been tailored to make configuration, graphics use, testing and database setup of the 920i extremely user-friendly.

Some applications are more complicated and require programming. For those, we've developed the iRite™ programming language. What's so significant about iRite is that it uses real-world scale terms. There are no cryptic codes here. In other words, you don't need a degree in computer science to program the 920i.

From simple to sophisticated, the 920i can handle any task. It's the programmable indicator you've been waiting for.

What solutions will the 920i provide for your customers?



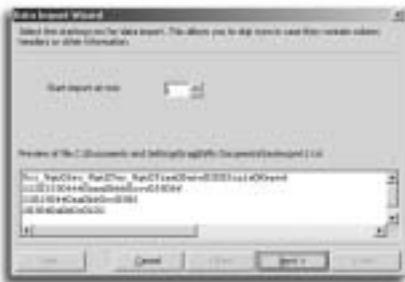
The 920i gives your customers a single instrument that can easily perform a multitude of complex tasks. We all know that as business gets more competitive, your customers need more from their systems. Instrumentation has to do more, and do it faster and more efficiently. The 920i will fill those needs.

In many applications, the indicator has to be more than just an indicator. It also has to be a controller, and an operator needs to have complete control in a process. The 920i features the largest display size in its class, allowing an operator to see everything that's happening, as it happens. Six selectable character sizes from .25" up to 1.2" can be displayed, along with real-time bar graphs and graphic icons. Prompts instruct operators to perform tasks necessary for an efficient process. The 920i can display five soft key functions at once (with more scrollable) for frequent tasks, leaving control of the indicator only an arm's length away. The 920i also allows an operator to enter alphanumeric data using the front panel, a standard computer keyboard, or PC, further enhancing convenience.

Every customer is looking for an instrument that can dramatically improve the speed of their system. With a selectable A/D rate of up to 960 updates per second on a single scale, the 920i is 16 times faster than the closest competitor. This sets a new standard in checkweighing, batching and filling applications, giving your customers greater accuracy and tighter control of the process. Need to run a multi-scale system? No problem. With an event-based programming language, single and multi-scale tasks are processed in order of highest priority with unmatched efficiency.

In an era of automation, communication capabilities are critical for integration into various systems. With four serial ports, four digital I/O onboard, and option boards for several bus protocols, the 920i has the flexibility to communicate with today's leading technologies.

How do I configure the 920i?



Configuring the 920i can be done through either the front panel or by using a PC and iRev software.

Front Panel

Many applications can be completed using simple front panel configuration. Much like our other RLWS indicators, the 920i uses easy-to-navigate menus for configuration.

iRev

When an application calls for more customization, iRev is the next step. This industry leading Windows®-based program is an easy to use tool for configuring the 920i. Some of its features include:

- Multiple wizards to assist you while configuring the indicator.
 - **The Scale Wizard:** select the application type and answer a few simple questions. The Scale Wizard does the rest.
 - **The Batching Wizard:** answer a few questions about the batching operation, and iRev creates an easy to understand setpoint framework to modify.
 - **The Data Import Wizard:** getting data into the 920i databases couldn't be easier. Answer the wizard's questions about the data and iRev extracts the information from the file and makes it available to download to the indicator.
- A user configurable LCD display. iRev allows you to design custom displays by dragging and dropping "widgets" from a toolbox onto a canvas.
- A web update utility to provide software upgrades available from the RLWS ftp site. If updates are available, you can simply download them. Sample configurations, programs, and other helpful utilities will be made available as well.
- User-friendly features such as: a powerful terminal mode to communicate with the 920i directly, a text editor, automated error reporting, flexible printing of configuration files, and multiple language support.



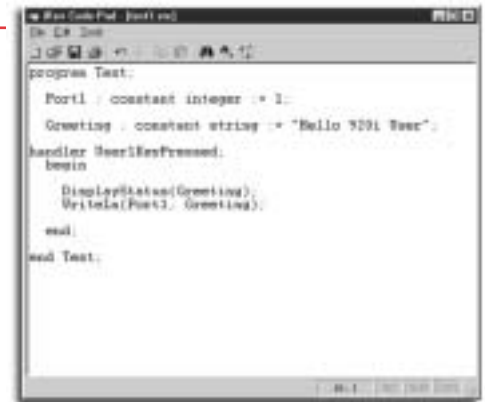
How do I program the 920i?



The 920i is programmed via the real world language, iRite.

iRite is written in real world scale terms, not hard-to-interpret code. In addition, iRite is a fully compiled language. Many other programmables compile code on the fly, slowing down the indicator.

With a technology we call ESP (Event Sequential Protocol), the 920i identifies the most critical tasks and executes them in order of highest priority.



What programming tools are available to help me get started?

To get you started, we are offering template programs through i-World, a protected, distributor-only section of the RLWS web site that is specific to the 920i. These "building blocks" will jump start your programming efforts for various applications, shortening your development time and increasing your margins. Template programs include:

- Formula storage
- Cattle weighing
- Flow control
- Database
- Dual scale simultaneous filling

New template programs will continually be added to i-World, so be sure to visit www.rlws.com often.



How fast is the 920i?



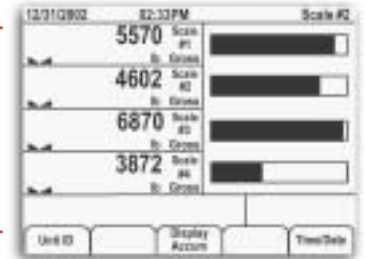
The incredible speed of the 920i gives it the ability to support a vast array of applications, from checkweighing to batching and filling. Every application is different, and this instrument has the speed to handle them all.

With a selectable A/D rate of up to 960 updates per second, the 920i is the fastest programmable on the market. The 920i's Event Sequential Protocol processes tasks with event handlers to identify, prioritize and execute with fantastic efficiency. The fully compiled programming language further enhances speed by targeting a high performance virtual machine that executes instructions and completes tasks in the most expedient manner. No resources are wasted compiling code while routines are being performed.

Speed is further accentuated through hardware. The 920i uses a high powered Motorola ColdFire® chip capable of processing up to 50,000 lines of code per second and 175,000 instructions per second.

How many channels does the 920i have?

The 920i features up to 28 A/Ds capable of single or multiple load cell input. The indicator can display four scales with required Legal-for-Trade information at one time, or up to 32 weight readings, widening the boundaries on multiple scale weighing systems.



What communication protocols does the 920i support?



The 920i's expansive interfaces allow integration into many different and complex applications, making it one very flexible instrument.

The 920i features four on-board communication ports (RS-232, RS-422/485 and 20mA current loop) for connecting to peripherals.

Optional communication protocols such as Allen-Bradley Remote I/O, DeviceNet™, Profibus DP® or Ethernet provide the open connectivity your customers need for automated processes.

Is the 920i expandable?

If an application requires expansion, the 920i has the room. The universal and desktop models come standard with two internal option card slots, the wall mount with eight, and the panel mount with four. All models can be expanded to 14 total slots, equipping the 920i with up to 32 serial ports, 340 digital I/O, 14 analog outputs, 28 A/Ds, or 14 pulse inputs. Option cards include:

- Single channel A/D
- Dual channel A/D
- 24 channel digital I/O
- Dual channel serial
- Analog output
- Pulse input
- 1MB memory
- Remote I/O*
- DeviceNet*
- Profibus DP*
- Ethernet**



How much memory is standard?

The 920i comes standard with 128K Flash memory for programming. It also comes with battery backed 64K on-board NV-RAM for data storage. Option slots allow up to 14, 1MB memory cards to be added—providing more than enough memory for any job.

What are the 920i's database capabilities?

The database structure of the 920i is more flexible than any other programmable instrument. You can partition the memory so that each database consumes only the amount of memory required by the application.

You can use iRev to import or export delimited text files, XML files, or Excel 97/2000 files for easy transfer of records. Over 1/4 million records are possible per database with up to 20 fields per record, allowing you to store label and ticket formats, bar codes, and customer information. The 920i can also be programmed to generate reports.

| Item | Sales Order | Shipping Co. | Weight | Time |
|------|-------------|-----------------|---------|-------|
| 1234 | 101001-01 | FedEx Overnight | 1275 lb | 8:27 |
| 1234 | 101001-02 | UPS Ground | 1627 lb | 8:25 |
| 1234 | 101001-03 | FedEx Overnight | 77 lb | 8:26 |
| 1234 | 101001-04 | UPS Ground | 426 lb | 8:23 |
| 1234 | 101001-05 | UPS Standard | 158 lb | 8:43 |
| 1234 | 101001-06 | UPS Rest | 15 lb | 8:25 |
| 1234 | 101001-07 | UPS Ground | 878 lb | 8:35 |
| 1234 | 101001-08 | UPS Standard | 2290 lb | 8:43 |
| 1234 | 101001-09 | UPS Rest | 492 lb | 8:48 |
| 1234 | 101001-10 | FedEx Overnight | 30 lb | 8:51 |
| 1234 | 101001-11 | UPS Rest | 850 lb | 8:59 |
| 1234 | 101001-12 | UPS Ground | 1285 lb | 9:01 |
| 1234 | 101001-13 | UPS Rest | 2280 lb | 9:11 |
| 1234 | 101001-14 | UPS Rest | 852 lb | 9:20 |
| 1234 | 101001-15 | FedEx Overnight | 50 lb | 9:21 |
| 1234 | 101001-16 | UPS Rest | 595 lb | 9:30 |
| 1234 | 101001-17 | UPS Standard | 1780 lb | 9:47 |
| 1234 | 101001-18 | UPS Express | 378 lb | 9:52 |
| 1234 | 101001-19 | UPS Rest | 968 lb | 10:05 |
| 1234 | 101001-20 | UPS Ground | 1285 lb | 10:05 |
| 1234 | 101001-21 | UPS Rest | 2280 lb | 10:12 |
| 1234 | 101001-22 | UPS Rest | 852 lb | 10:22 |
| 1234 | 101001-23 | FedEx Overnight | 50 lb | 10:31 |
| 1234 | 101001-24 | UPS Rest | 595 lb | 10:42 |
| 1234 | 101001-25 | UPS Rest | 792 lb | 10:52 |

Can I store label formats?

Yes. Because the 920i can be programmed to store label formats in a database, you can decide the size and quantity of label formats you need based on the application. Formats can also be stored for use in multiple applications.

What support tools are available with the 920i?



We designed the 920i to function much like our IQ plus® series of indicators to make the start up easy for you. With such a vast range of capabilities, we developed a thorough package of support materials to help you take it to its full potential.

Documentation

The installation manual, programming reference manual, and option board sheets are comprehensive tools to help you understand the 920i's full capabilities.

Internet

A world of solutions awaits you at www.rlws.com. Not just a world... but *i-World*. *i-World* offers a vast array of information specifically in support of the 920i. You can find technical documentation and manuals in Adobe® pdf format, specifications, interactive application animations, video demonstrations, virtual tours, a menu of template programs, information on training services, and much more.

Phone

As always, RLWS is prepared to provide the most competent phone support available. We've developed the 920i support team to answer any technical and application questions you might have. U.S. customers can call 800-472-6703, and Canadian and Mexican customers can call 800-321-6703.



How can I get updates on the 920i and iRev?



Updates for the 920i and iRev are available through *i-World*. Modifications to software, new options, program templates, and more are available there. In addition, announcements will be sent to our distributor network via e-mail so that you're always on top of what's new with the 920i.

"*iTalk*," a newsletter tailored specifically to the 920i and iRev, will be periodically distributed to our dealer network to provide additional up-to-date information on the 920i, such as new features, new options, software upgrades, and much more.

What if I want training on the 920i and iRev?

Training on the functions, features and programming of the 920i will be available through Rice Lake Weighing Systems training services. ES555 classes will be held at Rice Lake February 18-21, March 18-21 and May 13-16. Spanish ES555 will be held June 24-27. To sign up, contact Cathy Severin by calling (800) 472-6703.



C&M SCALE
Website: www.cmscale.com
Email: support@cmscale.com

Toll Free: (800) 243-3721
In Chicago: (708) 771-0195
Fax: (708) 771-0195