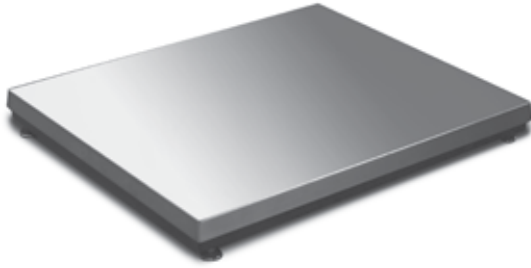


BenchMark™ LP

Low Profile Bench Scales



STANDARD FEATURES

- Mild steel base construction
- 304 stainless steel cover
- ABS junction box
- Four planar beam load cells
- Adjustable leveling feet
- 20ft of EL147 load cell cable
- Holes in lower frame for mounting scale without adjustable leveling feet



Ideal for Aviation Weighing. A complete system can be sold with the Tracer Av. Reference Instrumentation/Process Control for specifications

APPROVALS



Measurement
Canada
Approved

SPECIFICATIONS

LOAD CELL, RATED OUTPUT:

1.0mV/V +/- 10%

END LOAD CAPACITY:

60% of full scale capacity

CABLE LENGTH:

20ft (6.1m) for connecting j-box to indicator

APPROVALS:

NTEP Certified except 1000lb capacity,
Measurement Canada Approved AM-5660,
except 500kg capacity

WARRANTY:

Two-year limited warranty

PLATFORM DIMENSIONS (L X W X H)

PART#	CAPACITY	PLATFORM DIMENSIONS (L X W X H)
97662.....	100lb (50kg).....	18in x 18in x 2.54in (2.00in*)
97663.....	250lb (125kg).....	18in x 18in x 3.00in (2.18in*)
97664.....	500lb (250kg).....	18in x 18in x 3.06in (2.26in*)
97665.....	100lb (50kg).....	24in x 24in x 2.54in (2.00in*)
97666.....	250lb (125kg).....	24in x 24in x 3.00in (2.18in*)
97667.....	500lb (250kg).....	24in x 24in x 3.06in (2.26in*)
97668.....	500lb (250kg).....	30in x 30in x 3.06in (2.26in*)
97669**.....	1,000lb (500kg).....	30in x 30in x 3.38in (2.58in*)
97670.....	500lb (250kg).....	36in x 36in x 3.06in (2.26in*)
97671**.....	1,000lb (500kg).....	36in x 36in x 3.38in (2.58in*)

*Height without adjustable leveling feet

** Non-NTEP and not measurement Canada Approved

PART #	CAPACITY	PLATFORM DIMENSIONS	EST. SHIP WEIGHT
97662.....	100lb.....	18in x 18in x 2.54in (2.00in*).....	75lb.....
97663.....	250lb.....	18in x 18in x 3.06in (2.18in*).....	85lb.....
97664.....	500lb.....	18in x 18in x 3.06in (2.26in*).....	85lb.....
97665.....	100lb.....	24in x 24in x 2.54in (2.00in*).....	85lb.....
97666.....	250lb.....	24in x 24in x 3.00in (2.18in*).....	100lb.....
97667.....	500lb.....	24in x 24in x 3.06in (2.26in*).....	100lb.....
97668.....	500lb.....	30in x 30in x 3.06in (2.26in*).....	135lb.....
97669**.....	1,000lb.....	30in x 30in x 3.38in (2.58in*).....	135lb.....
97670.....	500lb.....	36in x 36in x 3.06in (2.26in*).....	175lb.....
97671**.....	1,000lb.....	36in x 36in x 3.38in(2.58in*).....	175lb.....

C&M SCALE
CALL FOR A QUOTE!
www.cmscale.com

Toll Free (800) 243-3721
Phone # (708) 771-0100
Fax # (708) 771-0195