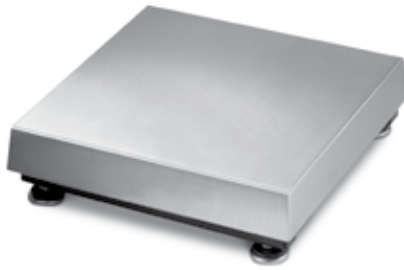


BenchMark™ Mild, Stainless Steel, HE Series



STANDARD FEATURES

- 304 stainless steel construction
- LifeGuard™ base design isolates load cell from overloads and shock loads for added durability
- Specially designed adjustable support feet provide exceptional traction and won't scratch surfaces

APPROVALS



Measurement Meets USDA
Canada Approved Requirements

SPECIFICATIONS

LOAD CELL, NTEP - CERTIFIED:

Mild steel and stainless steel: aluminum, environmentally sealed

HE: Stainless steel, hermetically sealed, IP69

OUTPUT IMPEDANCE:

Mild steel and stainless steel: 350 ohms

HE: 1000 ohms

MAXIMUM OVERLOAD:

150-200% depending on capacity

OVERLOAD PROTECTION:

Five point, independently adjusted

CABLE LENGTH:

10 ft (3m)

COMPENSATED TEMPERATURE

RANGE:

14°F to 104°F (-10°C to 40°C)

APPROVALS:

NTEP Certified per H-44, Class III, 5000d,

CC #95-072A2

Measurement Canada approved, AM-5082

WARRANTY:

Mild steel and stainless steel:

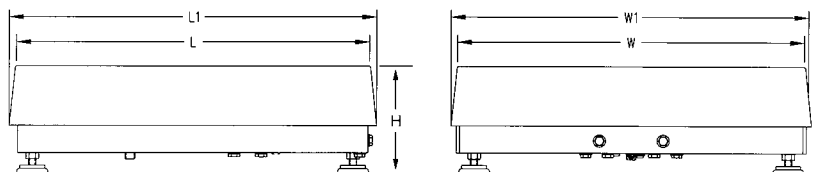
Two-year limited warranty

HE: Three-year limited warranty including water ingress

DIMENSIONS

PART # (MILD)	PART # (STAINLESS)	PART # (HE)	CAPACITY	PLATFORM SIZE (L X W)	L1	W1	H (MILD & STAINLESS STEEL)	H (HE)
18580	N/A	N/A	30 (15kg)	12 in x 12 in	12.50 in	12.50 in	4.12 in	N/A
18582	N/A	N/A	50 (25kg)	12 in x 12 in	12.50 in	12.50 in	4.12 in	N/A
18584	N/A	N/A	100 (50kg)	12 in x 12 in	12.50 in	12.50 in	4.12 in	N/A
18586	32918	86950	50 (25kg)	12 in x 18 in	12.50 in	18.50 in	MS 4.12 in SST 3.62 in	4 in
18588	32919	86951	100 (50kg)	12 in x 18 in	12.50 in	18.50 in	MS 4.12 in SST 3.62 in	4 in
18590	18591	86952	50 (25 kg)	18 in x 18 in	18.75 in	18.75 in	5.25 in	5.25 in
18592	18593	86953	100 (50kg)	18 in x 18 in	18.75 in	18.75 in	5.25 in	5.25 in
18594	18595	86954	150 (75kg)	18 in x 18 in	18.75 in	18.75 in	5.25 in	5.25 in
18596	18697	86955	200 (100kg)	18 in x 18 in	18.75 in	18.75 in	5.25 in	5.25 in
18598	18599	86956	250 (125kg)	18 in x 18 in	18.75 in	18.75 in	5.25 in	5.5 in
18600	18601	86957	300 (150kg)	18 in x 18 in	18.75 in	18.75 in	5.25 in	5.5 in
18602	18603	86958	500 (250kg)	18 in x 18 in	18.75 in	18.75 in	5.25 in	5.5 in
18604	18605	86959	1,000 (500kg)	18 in x 18 in	18.75 in	18.75 in	5.25 in	5.5 in
18606	18607	86960	50 (25kg)	18 in x 24 in	18.75 in	24.75 in	5.25 in	5.25 in
18608	18609	86961	100 (50kg)	18 in x 24 in	18.75 in	24.75 in	5.25 in	5.25 in
18610	18611	86962	150 (75kg)	18 in x 24 in	18.75 in	24.75 in	5.25 in	5.25 in
18612	18613	86963	200 (100kg)	18 in x 24 in	18.75 in	24.75 in	5.25 in	5.25 in
18614	18615	86964	250 (125kg)	18 in x 24 in	18.75 in	24.75 in	5.25 in	5.5 in
18616	18617	86965	300 (150kg)	18 in x 24 in	18.75 in	24.75 in	5.25 in	5.5 in
18618	18619	86966	500 (250kg)	18 in x 24 in	18.75 in	24.75 in	5.25 in	5.5 in
18620	18621	86967	1,000 (500kg)	18 in x 24 in	18.75 in	24.75 in	5.25 in	5.5 in
18622	18623	86968	100 (50kg)	24 in x 24 in	24.75 in	24.75 in	5.25 in	5.25 in
18624	18625	86969	150 (75kg)	24 in x 24 in	24.75 in	24.75 in	5.25 in	5.25 in
18626	18627	86970	200 (100kg)	24 in x 24 in	24.75 in	24.75 in	5.25 in	5.25 in
18628	18629	86971	250 (125kg)	24 in x 24 in	24.75 in	24.75 in	5.25 in	5.5 in
18630	18631	86972	300 (150kg)	24 in x 24 in	24.75 in	24.75 in	5.25 in	5.5 in
18632	18633	86973	500 (250kg)	24 in x 24 in	24.75 in	24.75 in	5.25 in	5.5 in
18634	18635	86974	1,000 (500kg)	24 in x 24 in	24.75 in	24.75 in	5.25 in	5.5 in

Note: 1"=25.4 mm



BenchMark™ Mild, Stainless, HE Series

PART #	CAPACITY	PLATFORM DIMENSIONS	EST. SHIP WEIGHT
Mild Steel Series			
18580.....	30lb.....	12 in x 12 in x 4.12 in.....	20lb.....
18582.....	50lb.....	12 in x 12 in x 4.12 in.....	20lb.....
18584.....	100lb.....	12 in x 12 in x 4.12 in.....	20lb.....
18586.....	50lb.....	12 in x 18 in x 4.12 in.....	37lb.....
18588.....	100lb.....	12 in x 18 in x 4.12 in.....	37lb.....
18590.....	50lb.....	18 in x 18 in x 5.25 in.....	68lb.....
18592.....	100lb.....	18 in x 18 in x 5.25 in.....	68lb.....
18594.....	150lb.....	18 in x 18 in x 5.25 in.....	68lb.....
18596.....	200lb.....	18 in x 18 in x 5.25 in.....	68lb.....
18598.....	250lb.....	18 in x 18 in x 5.25 in.....	68lb.....
18600.....	300lb.....	18 in x 18 in x 5.25 in.....	68lb.....
18602.....	500lb.....	18 in x 18 in x 5.25 in.....	68lb.....
18604.....	1,000lb.....	18 in x 18 in x 5.25 in.....	68lb.....
18606.....	50lb.....	18 in x 24 in x 5.25 in.....	78lb.....
18608.....	100lb.....	18 in x 24 in x 5.25 in.....	78lb.....
18610.....	150lb.....	18 in x 24 in x 5.25 in.....	78lb.....
18612.....	200lb.....	18 in x 24 in x 5.25 in.....	78lb.....
18614.....	250lb.....	18 in x 24 in x 5.25 in.....	78lb.....
18616.....	300lb.....	18 in x 24 in x 5.25 in.....	78lb.....
18618.....	500lb.....	18 in x 24 in x 5.25 in.....	78lb.....
18620.....	1,000lb.....	18 in x 24 in x 5.25 in.....	78lb.....
18622.....	100lb.....	24 in x 24 in x 5.25 in.....	78lb.....
18624.....	150lb.....	24 in x 24 in x 5.25 in.....	84lb.....
18626.....	200lb.....	24 in x 24 in x 5.25 in.....	84lb.....
18628.....	250lb.....	24 in x 24 in x 5.25 in.....	84lb.....
18630.....	300lb.....	24 in x 24 in x 5.25 in.....	84lb.....
18632.....	500lb.....	24 in x 24 in x 5.25 in.....	84lb.....
18634.....	1,000lb.....	24 in x 24 in x 5.25 in.....	84lb.....
Stainless Steel Series			
32918.....	50lb.....	12 in x 18 in x 3.62 in.....	37lb.....
32919.....	100lb.....	12 in x 18 in x 3.62 in.....	37lb.....
18591.....	50lb.....	18 in x 18 in x 5.25 in.....	68lb.....
18593.....	100lb.....	18 in x 18 in x 5.25 in.....	68lb.....
18595.....	150lb.....	18 in x 18 in x 5.25 in.....	68lb.....
18597.....	200lb.....	18 in x 18 in x 5.25 in.....	68lb.....
18599.....	250lb.....	18 in x 18 in x 5.25 in.....	68lb.....
18601.....	300lb.....	18 in x 18 in x 5.25 in.....	68lb.....
18603.....	500lb.....	18 in x 18 in x 5.25 in.....	68lb.....
18605.....	1,000lb.....	18 in x 18 in x 5.25 in.....	68lb.....
18607.....	50lb.....	18 in x 24 in x 5.25 in.....	78lb.....
18609.....	100lb.....	18 in x 24 in x 5.25 in.....	78lb.....
18611.....	150lb.....	18 in x 24 in x 5.25 in.....	78lb.....
18613.....	200lb.....	18 in x 24 in x 5.25 in.....	78lb.....
18615.....	250lb.....	18 in x 24 in x 5.25 in.....	78lb.....
18617.....	300lb.....	18 in x 24 in x 5.25 in.....	78lb.....
18619.....	500lb.....	18 in x 24 in x 5.25 in.....	78lb.....
18621.....	1,000lb.....	18 in x 24 in x 5.25 in.....	78lb.....
18623.....	100lb.....	24 in x 24 in x 5.25 in.....	84lb.....
18625.....	150lb.....	24 in x 24 in x 5.25 in.....	84lb.....
18627.....	200lb.....	24 in x 24 in x 5.25 in.....	84lb.....
18629.....	250lb.....	24 in x 24 in x 5.25 in.....	84lb.....
18631.....	300lb.....	24 in x 24 in x 5.25 in.....	84lb.....
18633.....	500lb.....	24 in x 24 in x 5.25 in.....	84lb.....
18635.....	1,000lb.....	24 in x 24 in x 5.25 in.....	84lb.....

C&M SCALE
 CALL FOR A QUOTE!
www.cmscale.com

Toll Free (800) 243-3721
 Phone # (708) 771-0100
 Fax # (708) 771-0195

PART #	CAPACITY	PLATFORM DIMENSIONS	EST. SHIP WEIGHT
HE Series			
86950.....	50lb.....	12 in x 18 in x 4 in.....	37 lb.....
86951.....	100lb.....	12 in x 18 in x 4 in.....	37 lb.....
86952.....	50lb.....	18 in x 18 in x 5.25 in.....	68 lb.....
86953.....	100lb.....	18 in x 18 in x 5.25 in.....	68 lb.....
86954.....	150lb.....	18 in x 18 in x 5.25 in.....	68 lb.....
86955.....	200lb.....	18 in x 18 in x 5.25 in.....	68 lb.....
86956.....	250lb.....	18 in x 18 in x 5.5 in.....	68 lb.....
86957.....	300lb.....	18 in x 18 in x 5.5 in.....	68 lb.....
86958.....	500lb.....	18 in x 18 in x 5.5 in.....	68 lb.....
86959.....	1,000lb.....	18 in x 18 in x 5.5 in.....	68 lb.....
86960.....	50 lb.....	18 in x 24 in x 5.25 in.....	78 lb.....
86961.....	100 lb.....	18 in x 24 in x 5.25 in.....	78 lb.....
86962.....	150 lb.....	18 in x 24 in x 5.25 in.....	78 lb.....
86963.....	200 lb.....	18 in x 24 in x 5.25 in.....	78 lb.....
86964.....	250 lb.....	18 in x 24 in x 5.5 in.....	78 lb.....
86965.....	300 lb.....	18 in x 24 in x 5.5 in.....	78 lb.....
86966.....	500 lb.....	18 in x 24 in x 5.5 in.....	78 lb.....
86967.....	1,000 lb.....	18 in x 24 in x 5.5 in.....	78 lb.....
86968.....	100 lb.....	24 in x 24 in x 5.25 in.....	84 lb.....
86969.....	150 lb.....	24 in x 24 in x 5.25 in.....	84 lb.....
86970.....	200 lb.....	24 in x 24 in x 5.25 in.....	84 lb.....
86971.....	250 lb.....	24 in x 24 in x 5.5 in.....	84 lb.....
86972.....	300 lb.....	24 in x 24 in x 5.5 in.....	84 lb.....
86973.....	500 lb.....	24 in x 24 in x 5.5 in.....	84 lb.....
86974.....	1,000 lb.....	24 in x 24 in x 5.5 in.....	84 lb.....

OPTIONS/ACCESSORIES

53001**	304 stainless steel clamshell for added load cell protection (12 in x 12 in, 12 in x 18 in) (for mild and stainless steel)
41292**	304 stainless steel clamshell for added load cell protection (18 in x 18 in, 18 in x 24 in and 24 in x 24 in), except not 1,000lb capacity (for mild and stainless steel)
18805**	304 stainless steel clamshell for added load cell protection (18 in x 18 in 18 in x 24 in and 24 in x 24 in), 1,000lb capacity only
64574	12 in column for IQ plus® 355 or IQ plus® 210, 320IS (without battery option), 320IS Plus (without battery option) ..
64575	12 in column for IQ plus® 390-DC or IQ plus® 590-DC
88657.....	12 in column for 420 plus®
66691*	18 in column for IQ plus® 355 or IQ plus® 210, 320IS (without battery option), 320IS Plus (without battery option) ..
66692*	18 in column for IQ plus® 390-DC or IQ plus® 590-DC
88658.....	18 in column for 420 plus®
64576.....	Attachment bracket for IQ plus® 355 or IQ plus® 210, 420 plus, 320IS (without battery option), 320IS Plus (without battery option).....
64577.....	Attachment bracket for IQ plus® 390-DC or IQ plus® 590-DC
22125.....	Additional operating manual.....

* Not recommended for use with scale bases smaller than 12 in x 12